



ST. VINCENT AND THE GRENADINES

MARITIME ADMINISTRATION

CIRCULAR N° GEN 010

**ROUTEING MEASURES OTHER THAN TRAFFIC SEPARATION
SCHEMES INFORMATION ON THE EXISTING DEEP-WATER
ROUTE OFF GOTLAND ISLAND**

IMO Circular SN.1/Circ.250/Add.1

TO: **SHIOWNERS, SHIPS' OPERATORS AND
MANAGERS, MASTERS**

APPLICABLE TO: All vessels
EFFECTIVE AS FROM: Date of this Circular

Monaco, 19th January 2010

This Administration draws to the attention of the ship-owners, ships' operators, managers and masters the annexed Circular SN.1/Circ.250/Add.1 concerning the information on the existing deep-water route off Gotland Island.

INTERNATIONAL MARITIME ORGANIZATION
4 ALBERT EMBANKMENT
LONDON SE1 7SR

Telephone: 020 7735 7611
Fax: 020 7587 3210



IMO

E

Ref. T2-OSS/2.7.1

SN.1/Circ.250/Add.1
27 November 2009

ROUTEING MEASURES OTHER THAN TRAFFIC SEPARATION SCHEMES

INFORMATION ON THE EXISTING DEEP-WATER ROUTE OFF GOTLAND ISLAND

1 At the request of the Government of Sweden, the information contained in the annex relating to the existing deep-water route off Gotland Island is brought to the attention of Member Governments.

ANNEX

**NOTICE TO MARINERS
PIPELINES INSTALLATION IN THE BALTIC SEA DURING 2010–2012**

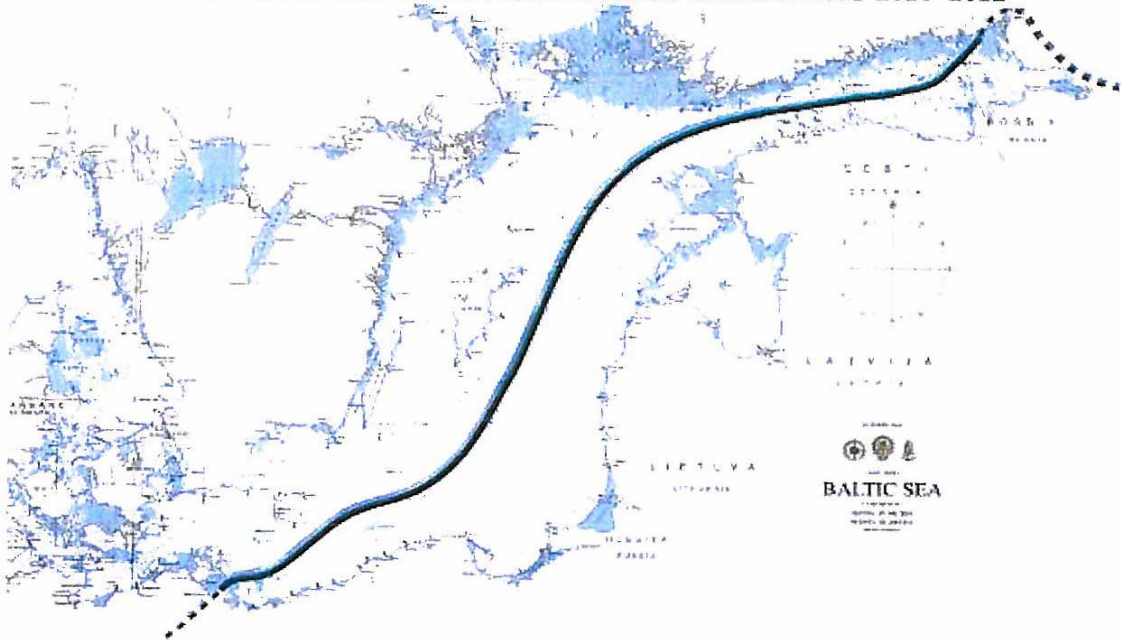


Figure 1: Nord Stream Pipelines Route

Nord Stream is planning the offshore construction activities of a twin pipelines system between Russia and Germany via the Finnish, Swedish and Danish waters.

The construction operations will involve a significant number of installation vessels working along the selected route illustrated in Figure 1.

The provisional list of the engaged vessels is reported below:

- Pipelay Vessel Castoro Sei
- Pipelay Vessel Solitaire (Gulf of Finland only)
- Supply Vessel
- 3–4 Anchor Handling Tugs
- 3–4 Pipe-carriers
- Survey Vessel
- Rock Dumping Vessels
- Trenching Support Vessel
- Dredging Vessels (Near the shores of Germany and Russia)

PIPELINES INSTALLATION IN THE SWEDISH SECTOR DURING 2010–2012
Provisional Construction Schedule

The provisional construction operations schedule within the Swedish sector is summarised in Figure 2.

Nord Stream will periodically update the Swedish Transport Agency and the Swedish Maritime Administration with any schedule update.

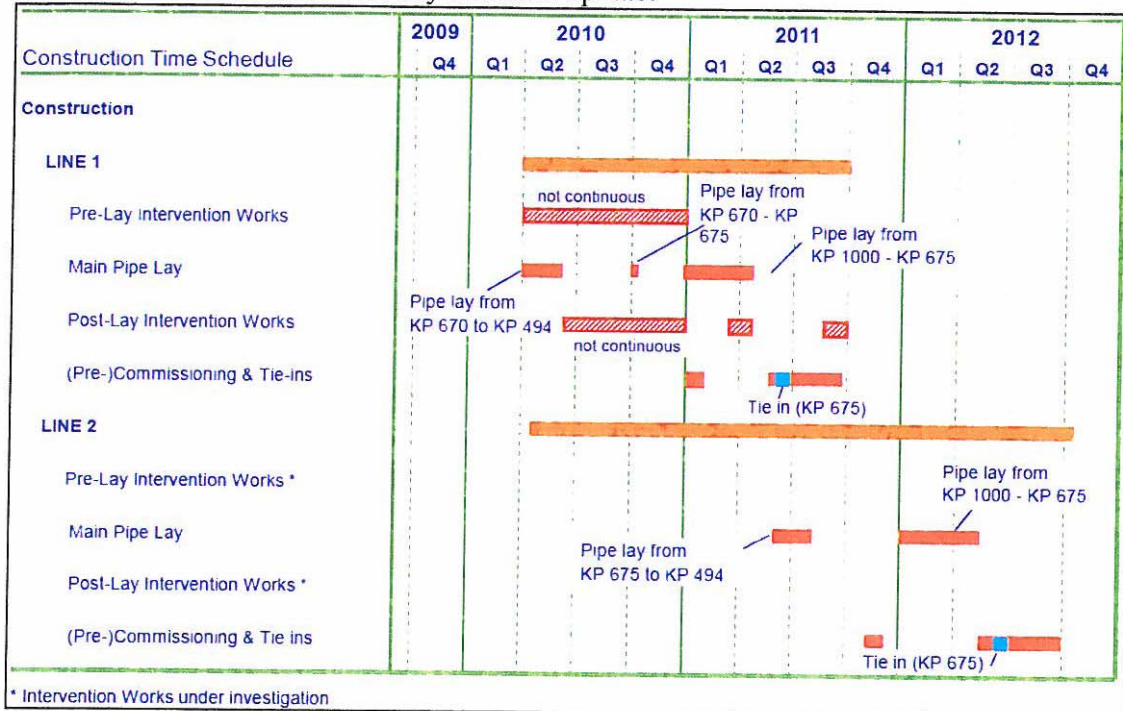


Figure 2: Nord Stream Pipelines Provisional Construction Schedule in the Swedish Sector

Deep Water Route Crossing

The construction vessels spread will cross the Deep Water Route south west of Gotland as illustrated in Figure 3.

The pipelay vessels spread will cross the Deep Water Route in correspondence of the following coordinates (all coordinates in WGS84 Datum, all grid coordinates in UTM zone 33 projection, shipping lanes digitised from paper copies of nautical chart):

Pipeline 1 Northern crossing

Lat/Lon: 55° 57' 19.16" N, 17° 16' 07.09" E (641639.238 6203431.063)

Pipeline 1 Southern Crossing

Lat/Lon: 55° 46' 13.07" N, 16° 45' 13.80" E (610024.405 6181907.249)

Pipeline 2 Northern Crossing

Lat/Lon: 55° 57' 21.50" N, 17° 16' 24.43" E (641937.581 6203513.209)

Pipeline 2 Southern Crossing

Lat/Lon: 55° 46' 15.43" N, 16° 45' 30.89" E (610320.306 6181987.725)

The installation spread will cross the shipping lane twice. Each crossing is calculated to last for approximately 12–15 days:

- The crossing by pipeline 1 installation will be during January/February 2011.
- The crossing by pipeline 2 installation will be during February/March 2012.

Information will be published in due time in Notice to Mariners. Ships approaching the crossing location within the Deep Water Route will also be contacted by the slowly moving pipelay vessel.

Ports

The construction spread will slowly move along the pipeline route. While on the Swedish sector the following ports will be used as logistics basis:

- Norrköping
The supply vessel will shuttle between the port and pipelay vessel with a frequency of twice a week
- Slite and Karlskrona
The 3 or 4 pipe carriers will shuttle between the port and pipelay vessel on a continuous basis.

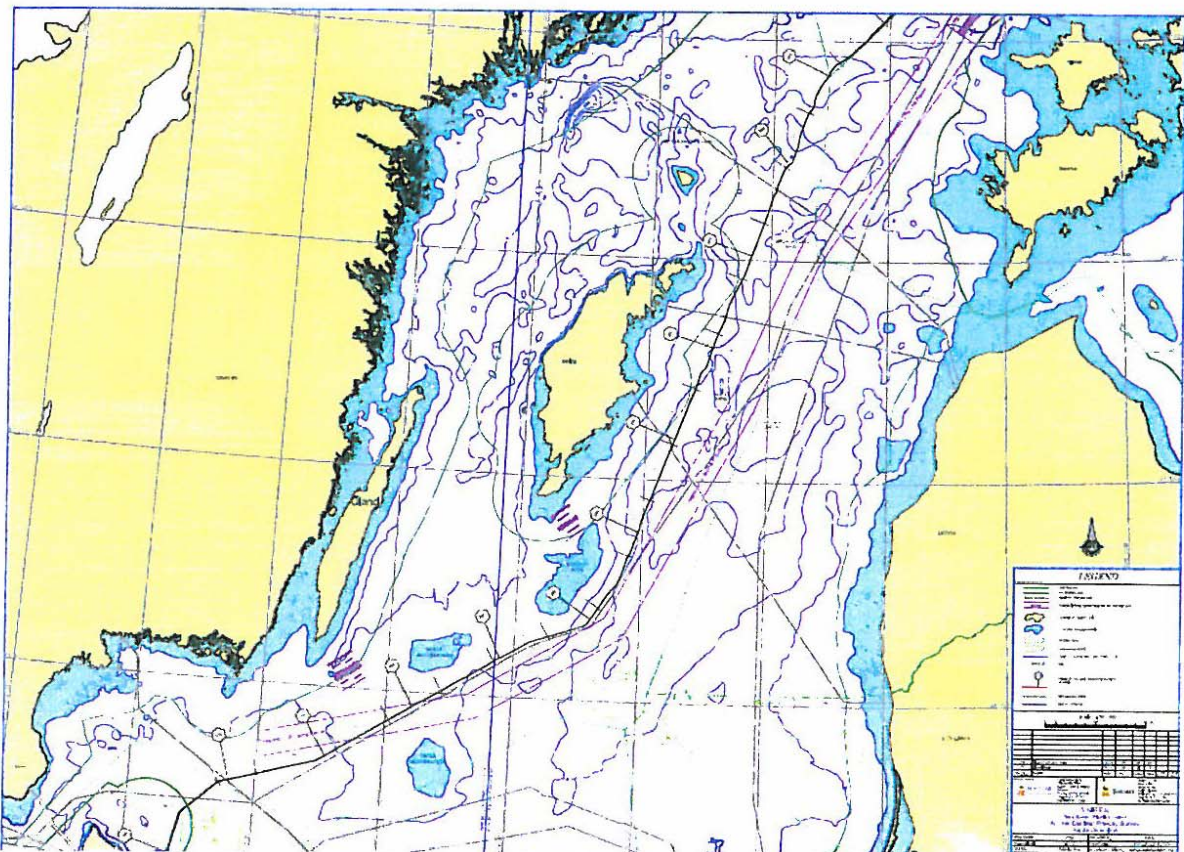


Figure 3: Nord Stream Pipelines Route within the Swedish Sector